

EXCELLENCE  
IN EVERYTHING



THE  
SIXTH  
FORM  
BOLTON

2025

# OPEN EVENTS

**SATURDAY 5 OCTOBER 2024**  
**Open Day 10:00am - 1:30pm**  
-to include a 30-minute quiet session 10.00am-10.30am\*

**THURSDAY 28 NOVEMBER 2024**  
**Open Evening 5:00pm - 8:00pm**  
-to include a 30-minute quiet session 5.00pm-5.30pm\*

\*Reduced numbers session - places will be reserved for visitors with special educational needs and disabilities, including those with social or sensory challenges.



Book your place here

# APPLY NOW

**Don't miss the deadline!**  
**Friday 31 January 2025**



Apply here



# CONTENTS

Principal's welcome	04
Your first choice	05
Ofsted	06
Facilities	07
Results	08
Student success	10
Choosing your study programme	12
Subject list	14
A Levels	16
Single Vocational Advanced Levels	18
Triple Vocational Advanced Levels	20
Entry requirements	22
Apply to study at B6	24
Your day at B6	26
Enrichment	28
B6 Academies	30
Careers and employability	32
Professional Growth Programme	34
Honours Programme	35
Student support	36
Find us	38

EXCELLENCE IN EVERYTHING





## PRINCIPAL'S WELCOME

The Sixth Form Bolton has a culture of high aspirations and expectations; we are very proud of our students and their exceptional levels of achievement and progression.

As a student at The Sixth Form, we put you at the heart of everything we do. Our staff are committed to ensuring that you achieve your potential! In becoming a Sixth Form student, you will be joining one of the highest performing colleges in the top 10% of the country.

We will support and guide you to achieve the best qualifications and all-round experiences to ensure that you are well prepared to move on to university or employment. You will benefit from high quality teaching and outstanding student support. We also offer an extensive enrichment programme that will enable you to widen your sixth form experience through a broad range of activities.

"STUDENTS ARE POSITIVE ABOUT THEIR LEARNING, ARE AMBITIOUS AND HAVE CLEAR ASPIRATIONS FOR THEIR FUTURE"

OFSTED 2024



We believe that the sixth form experience is about developing the whole person not just academic skills.

Due to our continued high levels of student success, demand for a place at The Sixth Form has continued to increase over the years and I would urge interested students to apply as soon as the application process opens.

I very much look forward to welcoming you to our Sixth Form and seeing you at one of our open events. Visit the various departments, talk to staff and students and discover for yourself the opportunities that await you at The Sixth Form Bolton.

**Stuart Merrills**  
Principal



## YOUR FIRST CHOICE

- ✓ Outstanding pass rate
- ✓ Exceptional progression onto university, employment and apprenticeships
- ✓ The only specialist Sixth Form College in Bolton
- ✓ Diverse curriculum offering A Levels, Vocational and Mixed Programmes
- ✓ Fantastic town centre location
- ✓ Award winning careers advice and guidance
- ✓ Personalised pastoral support
- ✓ Career and life enhancing enrichment programme
- ✓ Bespoke Professional Growth Programme for all learners
- ✓ The Honours Programme for preparation onto the country's most prestigious universities



# OFSTED INSPECTION

We were inspected by Ofsted from: 17 October to 20 October 2023.



The Ofsted report commended the many positive practices that are taking place across all aspects of The Sixth Form.



View the full Ofsted report here

"A SAFE, SECURE ENVIRONMENT WHERE STUDENTS DEVELOP THEIR CONFIDENCE AND RESILIENCE TO HELP THEM ACHIEVE AND PROGRESS."

# OUTSTANDING FACILITIES



View our outstanding facilities by taking our virtual tour



Rooftop Restaurant



Recording Studio



Study Areas



Bistro



Theatre



Science Labs



Careers Hub



Fitness Suite



Music Studio





RESULTS

We are a centre of excellence for A Level and Vocational A Level courses.

The Sixth Form Bolton is pleased to celebrate another year of outstanding Advanced Level results, affirming our position as a nationally high achieving Sixth Form College.

With students studying both academic and vocational qualifications performing above national benchmarks, leavers are now celebrating progressing onto top universities, or into apprenticeships and employment. This year's exceptional results reflect the sheer hard work, dedication and motivation of our students and the ongoing support from experienced teachers.

CONGRATULATIONS TO ALL OUR 2024 LEAVERS!



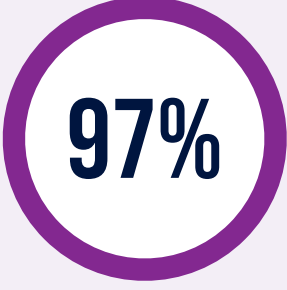
PASS RATE IN 72% OF SUBJECTS



PASS RATE FOR A LEVEL COURSES



BTEC EXTENDED DIPLOMA STUDENTS ACHIEVING HIGHER-GRADE PASSES



OF STUDENTS PROGRESS TO UNIVERSITY, APPRENTICESHIPS OR EMPLOYMENT



# STUDENT SUCCESS

Join the high number of students who progress on to university, employment or career focused apprenticeships each year.



## Blaise Heywood-Tattersall

**Former school:**  
St Ambrose Barlow RC High School

**Progression:**  
University of York to study Psychology

**Achievement:**  
A Level Drama & Theatre Studies (A\*)  
A Level English Language & Literature (A\*)  
A Level Psychology (A\*)

“Hard work really does pay off. I would like to thank the teachers for all their help, and the college for providing outstanding resources over the last two years.”

## James Barr

**Former school:**  
Smithills School

**Progression:**  
University of Strathclyde to study Microbiology and Immunology

**Achievement:**  
Triple Vocational A Level in Applied Science (D\*D\*D\*)



## Mohammad Kala

**Former school:**  
Essa Academy

**Progression:**  
Imperial College London to study Mathematics and Computer Science

**Achievement:**  
A Level Further Mathematics (A\*)  
A Level Mathematics (A\*)  
A Level Physics (A)  
Extended Project Qualification (A)



## Aamena Makkan

**Former school:**  
Bolton Muslim Girls' School

**Progression:**  
Degree Apprenticeship in Software Testing at Fujitsu

**Achievement:**  
Triple Vocational Advance Level in Information Technology (D\*D\*D\*)  
Core Mathematics Qualification (A)

“I’ve really enjoyed my time at The Sixth Form; making friends, laughing with teachers and the great memories in the classrooms.”



## Eva Pollitt

**Former school:**  
Fred Longworth High School

**Progression:**  
Loughborough University to study Sport and Exercise Science

**Achievement:**  
A Level Biology (A)  
A Level Physical Education (A)  
A Level Psychology (A\*)  
Core Maths Qualification (A)



“Loughborough University is one of the best in the country for Sport. A big thank you to all the staff and teachers who have helped me get here.”

“My vocational course was brilliant as it allowed me to develop my IT skills to a much higher level. As a result, I now have a place at a top university.”

## Franklin Ugwu

**Former school:**  
Bolton St Catherine's Academy

**Progression:**  
University of Liverpool to study Computer Science with Software Development

**Achievement:**  
Triple Vocational Advanced Level in Information Technology (D\*D\*D\*)





# CHOOSING YOUR STUDY PROGRAMME

All students follow a two-year full-time study programme, consisting of their chosen course(s), tutorial, skills development, work experience and enrichment. At The Sixth Form, we offer a wide range of:

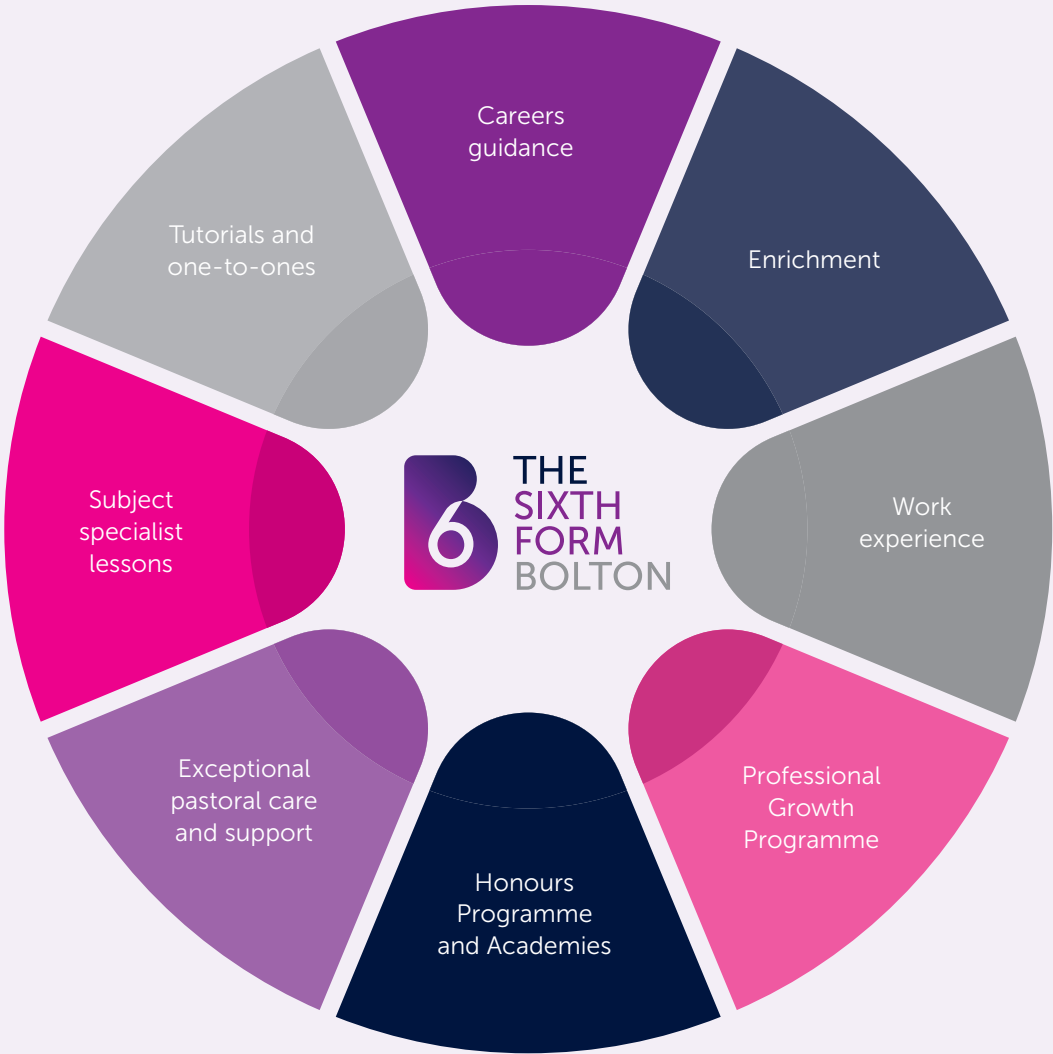
- A Levels
- Single Vocational Advanced Levels
- Triple Vocational Advanced Levels

Depending on your talent, career ambitions and qualifications, you can choose one of three pathways.



"UNIVERSITIES WELCOME STUDENTS WITH BOTH VOCATIONAL AND A LEVEL QUALIFICATIONS"

# YOUR TWO-YEAR STUDY PROGRAMME ALSO INCLUDES:



At The Sixth Form, we believe in developing the whole person, not just your academic skills.

## A LEVEL SUBJECTS

- Accounting
- Art (Fine Art)
- Art, Craft & Design
- Biology
- Business
- Chemistry
- Computer Science
- Drama & Theatre Studies
- Economics
- English Language
- English Language & Literature
- English Literature
- Film Studies
- Geography
- Graphic Design
- History
- Law
- Mathematics
- Mathematics - Further
- Mathematics - Core (AS Level equivalent)
- Media Studies
- Photography
- Physical Education
- Physics
- Politics
- Psychology
- Religion, Ethics & Philosophy
- Sociology
- Spanish

## VOCATIONAL ADVANCED LEVEL SUBJECTS

### SINGLE VOCATIONAL ADVANCED LEVEL SUBJECTS

- Business
- Children’s Play, Learning & Development
- Criminology
- Health & Social Care
- Information Technology
- Law (Applied)
- Music
- Music Technology
- Performing Arts
- Psychology (Applied)
- Public Services (Uniformed)
- Science (Applied)
- Sport Science

### DOUBLE VOCATIONAL ADVANCED LEVEL SUBJECTS (Equivalent to 2 x A Levels)

- Music Technology
- Performing Arts

### TRIPLE VOCATIONAL ADVANCED LEVEL SUBJECTS

- Art, Design, and Communication
- Business
- Health & Social Care
- Information Technology
- Public Services (Uniformed)
- Science (Applied)
- Sport Science

### T LEVEL SUBJECT

- Education and Early Years



Due to the changing nature of further education and funding, courses are subject to change throughout the year. Please visit our website for our current course offer. Subject list correct at time of print.

Visit our website for full course information  
[www.bolton-sfc.ac.uk](http://www.bolton-sfc.ac.uk)



# A LEVELS

**A Levels:**

- Study three (or occasionally four) A Level subjects
- 29 subjects to choose from
- Two-year course
- Assessment is predominantly by examination
- Opportunity to join the Honours Programme and Extended Project Qualification (EPQ)
- GCSE Mathematics resit may be taken where appropriate, alongside a main programme of study

**A Levels will appeal strongly to students who:**

- Have enjoyed academic teaching and learning at school
- Thrive from examinations being the main form of assessment
- Wish to study traditional subjects such as English, History, Mathematics etc at a higher level
- Have aspirations for a career where A Levels are presently the preferred entry route. eg. Medicine, Veterinary Science, Law



View our wide range of A Levels here



## ENTRY REQUIREMENTS

Two GCSEs at grade 6 and three GCSEs at grade 5/4 including English Language and Mathematics. Or eight GCSEs at a minimum of grade 5.

Individual subjects have specific and higher entry requirements.

## STUDENT SUCCESS

### Philippa Lloyd

Former school:  
St. Mary's Catholic High School

Progression:  
University of Cambridge to study Economics

Achievement:  
A Level Economics (A\*)  
A Level Further Mathematics (A\*)  
A Level Mathematics (A\*)  
Extended Project Qualification (A\*)

*"I am very proud and overwhelmed to receive such great results. To study Economics at Cambridge is my dream, a big thank you to all the teachers who have helped me on this amazing journey."*





# SINGLE VOCATIONAL ADVANCED LEVELS

## Single Vocational Advanced Levels:

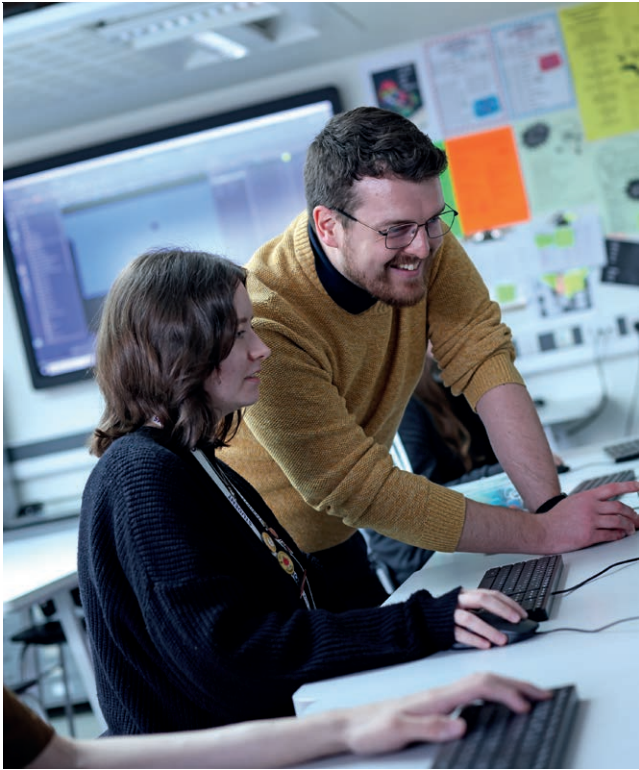
- Study three subjects
- Each subject is equivalent to one A Level
- Can be taken alongside other Single Vocational Advanced Levels as well as A Levels
- 13 Single Vocational Advanced Levels and 29 A Level subjects to choose from
- 2 Double Vocational Advanced Levels available (equivalent to two A Levels)
- Two-year course
- Assessment is mostly coursework with some exam/externally assessed units
- GCSE Mathematics resit may be taken where appropriate, alongside a main programme of study

## Studying Single Vocational Advanced Levels, or a mixed study programme, will appeal strongly to students who:

- Wish to keep their options open by studying a mixture of subjects
- Find exams more challenging and are stronger in their course work
- Have aspirations of progressing onto university, employment or career focused apprenticeships



View our wide range of Single Vocational Advanced Levels here



## ENTRY REQUIREMENTS

Two GCSEs at grade 6 and three GCSEs at grade 5/4 including English Language and Mathematics. Or eight GCSEs at a minimum of grade 5.

Individual subjects have specific and higher entry requirements.

## STUDENT SUCCESS

### Bunguke Gemama

Former school:  
Bolton St Catherine's Academy

Progression:  
University of Huddersfield to study Psychology

Achievement:  
Single Vocational Business (Dist)  
Single Vocational Health & Social Care (D\*)  
Single Vocational Applied Psychology (D\*)

*"Studying Single Vocational A Levels meant that I could still do a mixture of subjects without the pressure of lots of exams."*





# TRIPLE VOCATIONAL ADVANCED LEVELS

**Triple Vocational Advanced Levels:**

- Study one subject
- Equivalent to three A Levels
- Assessment is mostly coursework with some exam/externally assessed units
- GCSE English and Mathematics resit may be taken where appropriate, alongside a main programme of study
- Substantial industry placements for selected courses

**Studying a Triple Vocational Advanced Level will appeal strongly to students who:**

- Have an interest in a career or a specific vocation
- Are keen to learn new skills through a mix of practical and theoretical learning
- Find exams more challenging and are stronger in their course work
- Have aspirations of progressing onto university, employment or career focused apprenticeships



View our wide range of Triple Vocational Advanced Levels here



## ENTRY REQUIREMENTS

Five GCSEs at grade 9-4 including a grade 4 in GCSE English Language and a minimum grade 3 in Mathematics.

Individual subjects may have specific and higher entry requirements.

## STUDENT SUCCESS

### Joseph Regent

Former school:  
Canon Slade School

Progression:  
University of Central Lancashire (UCLan)  
to study Journalism

Achievement:  
Triple Vocational A Level in Health  
& Social Care (D\*D\*D\*)

*"My time at The Sixth Form has been fantastic. My course had lots of transferable skills and I'm really excited about going to university."*





# ENTRY REQUIREMENTS

## LEVEL 3 ADVANCED COURSES

### A LEVELS

Students studying three A Levels will be expected to have a minimum of two GCSEs at grade 6 and three GCSEs at grade 5/4 including English Language and Mathematics at grade 5/4 or above. Or eight GCSEs at a minimum of grade 5.

Students studying four A Levels will be expected to have a minimum of six GCSEs at grade 7, 8 or 9 including English Language and Mathematics at grade 6 or above.

## SINGLE / DOUBLE VOCATIONAL ADVANCED LEVELS

These may be taken alongside A Level courses and are subject to the same entry criteria.

### TRIPLE VOCATIONAL ADVANCED LEVELS

Students will be expected to have a minimum of five GCSEs at grade 9-4, or a Merit in a relevant Vocational Level 2 Diploma (or equivalent). In addition, students will need a grade 4 in GCSE English Language and a minimum grade 3 in Mathematics.

Entry requirements are subject to change throughout the year.



## ADDITIONAL COURSE REQUIREMENTS

A number of subjects, pathways and academies have additional entry requirements. Please visit our website for the latest entry requirements for each subject.



View our latest entry requirements here



Explore all courses here

## OFQUAL GCSE GRADING CHART

NEW GRADING STRUCTURE	PREVIOUS GRADING
9 8 7	A* A
6 5 4	B C
3 2 1	D E F G
U	U





# APPLY TO STUDY AT B6

You can apply to study at The Sixth Form Bolton via our website using the online application form. The application process is managed by the Admissions Team who will oversee the following key stages:

- the online application
- your interview
- your formal offer
- and your enrolment to The Sixth Form

When you apply, you will be asked to create an 'applicant portal' through which future communications and appointments will be managed. The email address and password you use for this will be very important, please do not use your school email.

## HERE TO HELP

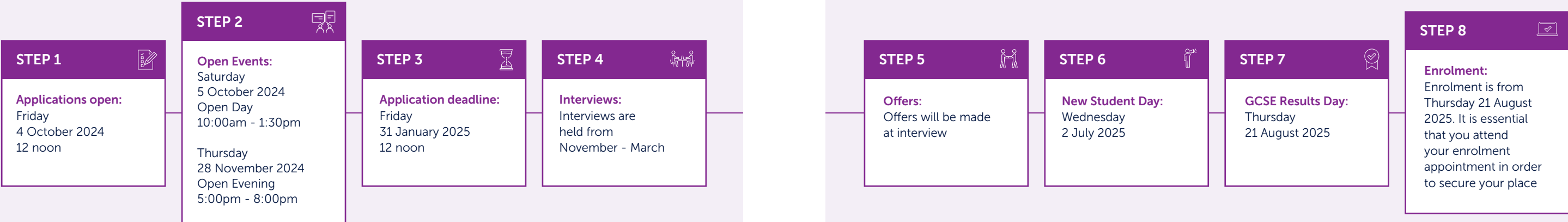
If you have any queries at all regarding your application, or if you require support to complete your application, please contact the Admissions Team on **01204 846215** or you can email **admissions@bolton-sfc.ac.uk**.



Apply here

**DON'T MISS THE DEADLINE**  
FRIDAY 31 JANUARY 2025

# APPLICATION TIMELINE



**LATE APPLICATIONS**

Late applications will be placed on a waiting list. Late applicants are not guaranteed an interview and applications will only be processed subject to availability of places.

# YOUR DAY AT B6

You will have your own unique timetable based on the subjects you have chosen.

Students are in college for approximately 15 hours per week. This includes your subject lessons, tutorial and Professional Growth Programme. You may then add additional activities such as enrichment, B6 academies and EPQ onto your timetable.

Your 15 hours will be spread across the week, Monday-Friday. You may have some mornings or afternoons free, or breaks in your timetable. You do not need to stay on campus during breaks, however, we recommend that you use this time to prioritise private study.

Free breakfasts are available for all students each day from 8am-8.25am in the B6 Bistro and Rooftop Restaurant.

The full Sixth Form day is shown on the outline timetable provided.



Discover what makes B6 unique



MONDAY	TUESDAY	WEDNESDAY	THURSDAY	FRIDAY
P1 8:40 - 10:00	P1 8:40 - 10:25	P1 8:40 - 10:25	P1 8:40 - 10:25	P1 8:40 - 10:20
Break 10 minutes	Break 10 minutes	Break 10 minutes	Break 10 minutes	Break 10 minutes
P2 10:10 - 11:40	P2 10:35 - 12:20	P2 10:35 - 12:20	P2 10:35 - 12:20	P2 10:30 - 12:05
Break 10 minutes	P3 Break or Group Coaching 12:25 - 13:00	P3 Break or Group Coaching 12:25 - 13:00	P3 Break or Group Coaching 12:25 - 13:00	P3 Break or Group Coaching 12:10 - 12:45
P3 11:50 - 13:10	P4 13:00 - 14:35	P4 13:00 - 14:35	P4 13:00 - 14:35	P4 12:45 - 14:05
P4 Break or Group Coaching 13:15 - 13:50	Break 5 minutes	Break 5 minutes	Break 5 minutes	Break 25 minutes
P5 13:50 - 15:05	P5 14:40 - 16:15	P5 14:40 - 16:15	P5 14:40 - 16:15	P5 14:30 - 15:50
P6 15:10 - 16:30				





# ENRICHMENT

Sixth Form is much more than just your academic qualifications.

At The Sixth Form Bolton we believe in developing the whole person, as we want you to achieve your full potential in and out of the classroom. As a B6 student, you will have the opportunity to take part in our extensive enrichment programme, this includes a wide range of career and life enhancing activities, clubs and societies.



Activities vary each year and are tailored to student demand. View our latest offer here.

Enrichment teaches you new skills and builds on your existing subject knowledge to make you stand out from the crowd when applying for university or employment. It is also a great way for you to make new friends and have fun.



Trips and Visits



Law Society



Performing Arts



Futures Academy



Field Trips



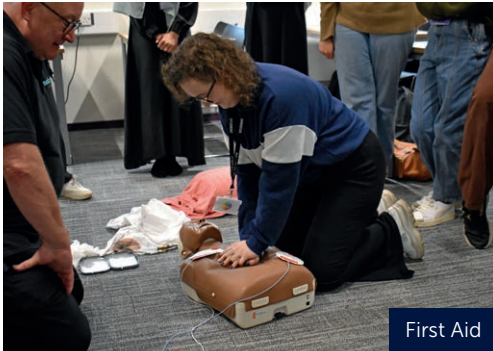
Sign Language



Women into Leadership



Medical Mavericks



First Aid



Learner Voice



Football Academy



Chess Club



# B6 ACADEMIES

As a student at The Sixth Form Bolton, you will have the opportunity to join one of our career enhancing academies.

Taken alongside your chosen subjects, our unique academies enhance your learning experience by offering specific career related experiences and skills-based activities.

Popular academies include:

- Apprenticeship Academy
- Futures Academy
- Performing Arts Academy
- Science Academy
- Sports Academies - Football, Cricket and Sports Performance Pathway



Explore  
B6 Academies



Cricket Academy



Performing Arts Academy



Apprenticeship Academy



Football Academy



Cricket Academy



Futures Academy



Sports Development



Sports Academies



Science Academy



## CAREERS AND EMPLOYABILITY

### CAREERS PROGRAMME

Our award-winning careers team offer a wide range of services to support your progression onto university, employment or an apprenticeship:

- Impartial careers guidance appointments with a qualified Careers Adviser
- Guest speakers from higher education, helping students to explore degree courses, student life and the university application process
- Numerous careers talks from a range of employment sectors
- Support with the UCAS application process
- Advice on job seeking, including: CV writing, applying for degree apprenticeships and interview preparation
- Annual Careers Fair, giving students the opportunity to meet with multiple universities and employers and to find out more about their post sixth form options
- Bespoke events within the curriculum and across the wider college, linking subjects to career exploration and labour market information, including: work-related project briefs and visits to a variety of workplace and university settings



### WORK PLACEMENTS

- All first-year students are expected to complete a one-week work placement
- Strong links to local and national employers for placement opportunities
- Support and guidance on how to find work experience
- Opportunities to attend workplace safari days
- Employer led live briefs



Discover more  
about careers here

### THE APPRENTICESHIP ACADEMY

The Apprenticeship Academy supports second-year students who wish to secure higher and degree level apprenticeships after sixth form. This programme helps students to understand the recruitment process and learn how to write strong applications and master interviews, with the goal of securing a highly competitive apprenticeship.

The academy offers a package of workshops and masterclasses delivered by employers, apprenticeship providers, and members of our B6 Alumni. These sessions are complemented with bespoke 1:1 guidance delivered by our Careers Team. Students in the academy will receive monthly sessions, including:

- Applications masterclass
- Interview workshop
- Mock assessment centre
- Trip to the National Apprenticeship show



### Gizem Hasanova

Little Lever School

A Level Biology, Chemistry, Psychology and Core Mathematics Qualification

Progression: Hull York Medical School to study Medicine

*"I'm so grateful to have had access to the Careers Team during my time at The Sixth Form, not only did they help me by providing information on what I needed to do to apply for medicine, but they also gave me incredible opportunities such as observing surgeries which really helped develop my skills and increased my motivation."*



### Saqib Patel

Harper Green School

A Level Geography, Mathematics, Physics and Honours Programme with EPQ

Progression: Degree apprenticeship with Sellafield for Nuclear and Mechanical Engineering

*"Throughout my time at The Sixth Form, I've been fortunate enough to partake in many 1:1 career sessions which ultimately led to me being able to realise what my personal and professional goals are. I believe these sessions really helped me secure offers from Russell Group Universities, degree apprenticeships and flight schools. The support from the Careers Team is amazing, they put on many sessions and the Apprenticeship Academy's mock assessment centre definitely helped me secure Degree Apprenticeship offers. The careers team also helped me secure a work placement with Northstone, they're fantastic at what they do!"*



## PROFESSIONAL GROWTH PROGRAMME

Our unique and exciting Professional Growth Programme allows you to explore your career goals and ambitions via sector-specific pathways. As part of your pathway, you will develop the labour-market awareness, employability, digital and technical skills necessary to succeed within your chosen field.

You will acquire this knowledge via a combination of self-led online learning in our professional growth suite and through a six-week programme of practical employability sessions. PGP lessons will appear on your timetable and are a compulsory part of your study programme.

PGP runs over two years and adapts with each stage of your journey at The Sixth Form. Each pathway is supported by a leading employer who has created the content to ensure that students are work/industry ready.



We currently have 9 pathways to choose from:

- ✓ STEM
- ✓ Medicine, Dentistry and Veterinary
- ✓ Law and Public Services
- ✓ Health and Social Care
- ✓ Business and Finance
- ✓ Creative
- ✓ Computing and IT
- ✓ Education
- ✓ Sport and Leadership



## STUDENT SUCCESS



### Anisha Mohammed

Harper Green School

A Level History, Mathematics, Politics and Honours Programme with EPQ

Progression: University of Oxford to study Philosophy, Politics and Economics

*"The Honours Programme has been paramount in helping me secure my place at the University of Oxford. The teachers are so helpful and extremely knowledgeable with regards to the application and selection process. I also really benefited from the cultural trips and visits."*



## HONOURS PROGRAMME

A bespoke aspirational programme for academically gifted students.

The Honours Programme is an additional pathway for students whose aspirations are to progress onto highly competitive courses at top universities, such as Oxford, Cambridge, Russell Group universities and also degree apprenticeships. As part of the programme, you'll be expected to commit extra time every week to this intensive support pathway.

As part of the Honours Programme, you will benefit from:

- Tailored support for specific applications to medical professions, Veterinary Science, Dentistry, Law, Mathematics and applications to Oxbridge and Russell Group universities
- The opportunity to study the Extended Project Qualification (EPQ)
- Honours tutorial and skills development programme
- Access to the prestigious Cambridge University HE+ programme
- Opportunity to join the Oxford University Humanities Pembroke North Project
- Academies in science and law
- Participation in prestigious university access programmes such as The University of Manchester
- Cultural trips and visits



Explore in more detail here



# STUDENT SUPPORT

We are here to help. There will always be support and guidance available for you during your time with us, including:

**Student Information** - a student helpdesk for timetables, ID cards, paying for trips, finance and bursaries, advice about anything!

**Progress Coaches** - located on the ground floor, they monitor your progress and offer group and individualised support and guidance throughout your time with us.

**The BSafe Safeguarding Team** - The Sixth Form is fully committed to the safety and wellbeing of all our students and has a team of specialist safeguarding officers on site, known as The Sixth Form 'BSafe' team.

**Student Liaison** - a visible team dedicated to ensuring a safe and respectful environment for all.

**Learning Services Team** - Learning Services offer bespoke support for learners with a variety of additional needs, including:

- Specialist one-to-one support
- Links with external support agencies
- Study support
- Quiet study areas
- Mentoring
- Health and wellbeing service
- Academic skills



**Lexie Leack**  
The Elton High School  
A Level Biology, Chemistry,  
Mathematics and Honours  
Programme with EPQ

*"The Cocoon and its staff have always been extremely welcoming and I know I always have a place to go if I'm stressed, need to chill or catch up on work. Without their assistance I would be struggling immensely around B6 and in class. I am forever grateful for everything they do for me."*



**Jack Bancroft**  
Nisai Virtual Academy  
Triple Vocational A Level  
Applied Science

*"The learning service team have been the current that made my journey flow and without them I would have hit a dam and really struggled. With their help and the pastoral/safeguarding team to turn to for support, my college journey has been next to perfect and I've loved every minute. I wouldn't have come so far or been offered five places at university without the encouragement of those kind hearted welcoming and accepting members of staff, I cannot fault any of them. All my thanks to the learning services team, you have my infinite gratitude."*



**THE COCOON**  
The Cocoon is a safe space for well-being activities and some time to practice self-care for students supported by our learning services team.  
  
In the Cocoon we offer a rolling programme of workshops to meet student needs. Examples of workshops include budgeting, confidence and self-image, creative expressions, exam stress, relaxation techniques and Lego therapy.



Learn more about our student support here



# FIND US

The Sixth Form Bolton is easy to get to and is located right at the heart of Bolton town centre.

**The Sixth Form Bolton**  
Deane Road,  
Bolton,  
BL3 5BU

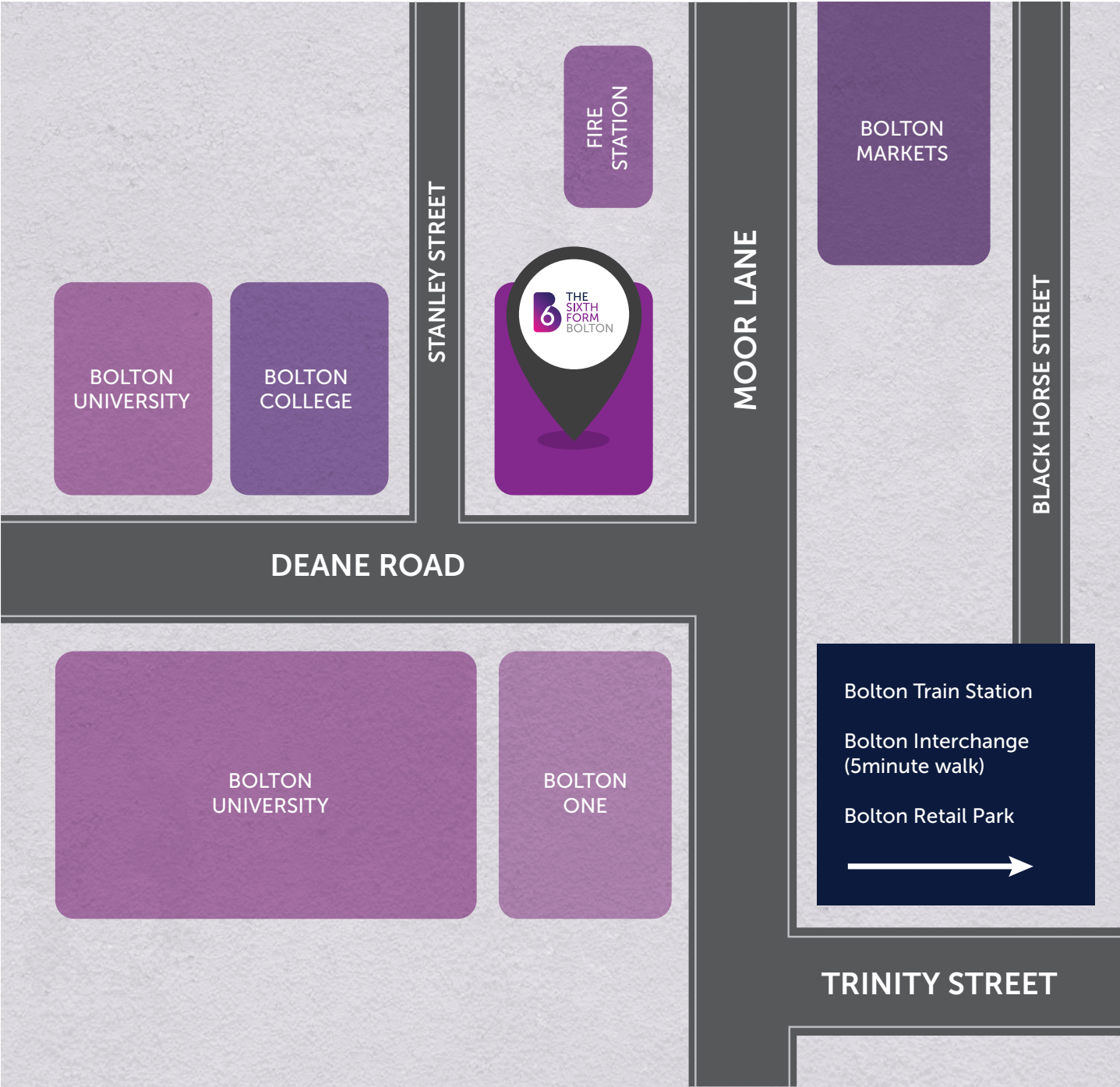
## TRAIN AND BUS (BOLTON INTERCHANGE)

The nearest train and bus station is Bolton Interchange, which is a 7 minute walk from The Sixth Form. There are easy links from Chorley, Bury, Walkden, Leigh, Salford, Wigan and Blackburn.

For further information on train and bus fares and times go to: [www.tfgm.com](http://www.tfgm.com) or speak to Student Information at The Sixth Form on 01204 846215

GREATER MANCHESTER  
RESIDENT STUDENTS AGED  
16 - 18 COULD BE ELIGIBLE FOR  
FREE TRAVEL USING THE GREATER  
MANCHESTER 'OUR PASS'

[www.ourpass.co.uk](http://www.ourpass.co.uk)





# DON'T MISS THE DEADLINE

FRIDAY 31 JANUARY 2025



**APPLY  
NOW**



The Sixth Form Bolton, Deane Road,  
Bolton, BL3 5BU

T: 01204 846215

E: [Info@bolton-sfc.ac.uk](mailto:Info@bolton-sfc.ac.uk)

E: [admissions@bolton-sfc.ac.uk](mailto:admissions@bolton-sfc.ac.uk)

[www.bolton-sfc.ac.uk](http://www.bolton-sfc.ac.uk)



# EXCELLENCE IN EVERYTHING